



**Downtown Improvement Board**  
**Regular Monthly Meeting**  
Thursday, Jan. 22, 2019  
7:30am

**AGENDA**

- I. Call to Order
  - a. Comments from the Chairwoman
- II. Recurring Agenda
  - a. Meeting was properly noticed
  - b. \* Approval of the proposed meeting agenda for January 22, 2019
  - c. \* Approval of the minutes from the regular meeting of the DIB held on December 20, 2018
- III. On-Going Business
  - a. LTU/MOU Loitering letter to Mayor Robinson and City Council - update
  - b. Jefferson Street Alley – update
  - c. StreetPlus – Cleaning Ambassador program update
  - d. Downtown Pensacola Alliance – IRS approved
- IV. Parking
  - a. \* Parking Consent Agenda
  - b. Passport Transition update
- V. Finance
  - a. \* Finance Consent Agenda
  - b. \* DIB – December Financials
  - c. \* DPMD – December Financials
- VI. Marketing Report
  - a. 2018 Plan



VII. New Business

- a. Safety
- b. \*ED quarterly bonus
- c. PensaLocal Award

VIII. Hold Items

- a. Parking Interlocal Agreement Modification – on hold from Nov. 2018
- b. Interlocal Agreement Plan for 2020 - on hold until after meeting with CRA

IX. Public Comment

X. Adjournment

Next meeting – February 26, 2019

**(\*) = approval item**

### **Executive Director Accomplishments:**

- Got all DIB, DPMD, Friends of Downtown and Downtown Alliance State, IRS, City, CRA reports and documents updated and in compliance.
- 2017/2018 Budget reconciliation and in compliance with annual projections
- Brought Parking Management In-house
- Created all internal documents and requirements for new parking department such as: employee handbook, benefit package, evaluations, job descriptions, policies and procedures.
- Creation and approval of the 2018/2019 DIB and DPMD Budgets
- Began transition to new platform provider
- Began integration of all back-office parking providers to new platform and planning for future reporting
- Worked with CRA to get new trash cans installed in DT core
- Facilitated the completion of the 2<sup>nd</sup> dance steps in Plaza Ferdinand
- Facilitated contract and implementation of LPR for 2-hour parking
- Installed 2-hour parking on Tarragona
- Replaced 40+ broken meters
- Implemented on-line appeals process for parking citations
- Completed 2017/2018 Audit
- Successful 2018 FCLF – grants, coordination, partnerships and execution
- Completed sidewalk pressure washing
- Worked with Parkeon and staff to improve cell service at paystations – especially during high volume usage
- Review and recommendations for 403(b) plan upgrades
- Update DIB employee handbook
- Evaluation and recommendation for improving cleaning ambassador program
- Harborview Public Parking signs installed
- Rebuilding relationships with City, CRA, PPC and County
- Timely reporting of monthly financials for Board and committees
- Alignment of Board and committee meetings and consent agendas
- DIB needed staff changes
- Strategic marketing plan/direction

**PENSACOLA**

200 E. Government Street, Suite 110  
 Pensacola, FL 32502  
**P:** (850) 262-0370 | **F:** (850) 262-0375

"If there is a problem with a SESCO product that you specified or we supplied, we will fix it... PERIOD"

<b>To:</b> LISSA DEES DOWNTOWN IMPROVEMENT BOARD		<b>Job/Project Name:</b> DOWNTOWN PENSACOLA ALLEY LIGHTING	
PENSACOLA, FL 32502		Pensacola, FL Bid Date: 1/18/2019	

Qty	Type	Mfg	Description	Price
4		THMI	SFC-5R-48L-250-NW-G2-(VOLT)-MGY	
8		THMI	CFX-XX32-G2-3N7-16	
3		THMI	CFX-XX32-G2-3N7-16	
TOTAL:				\$24,318.57

<b>Prices firm for entry by: 30 Days</b>	<b>Shipment by:</b>	<b>Lead Time: TBD</b>
--	---------------------	-----------------------

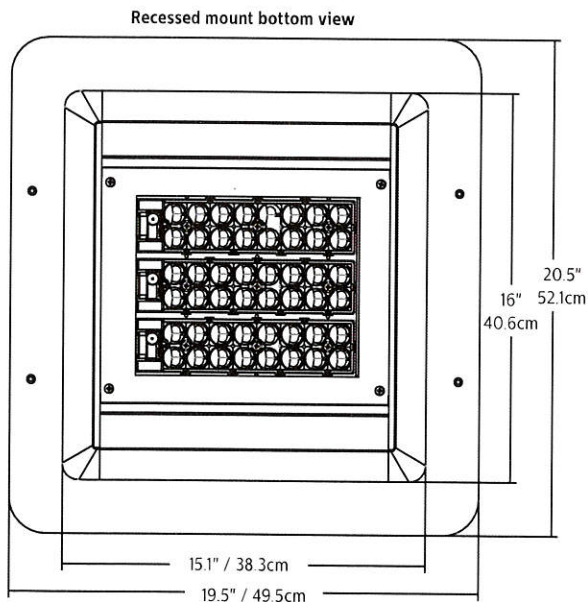
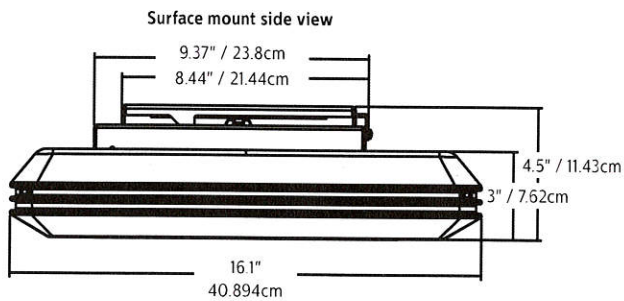
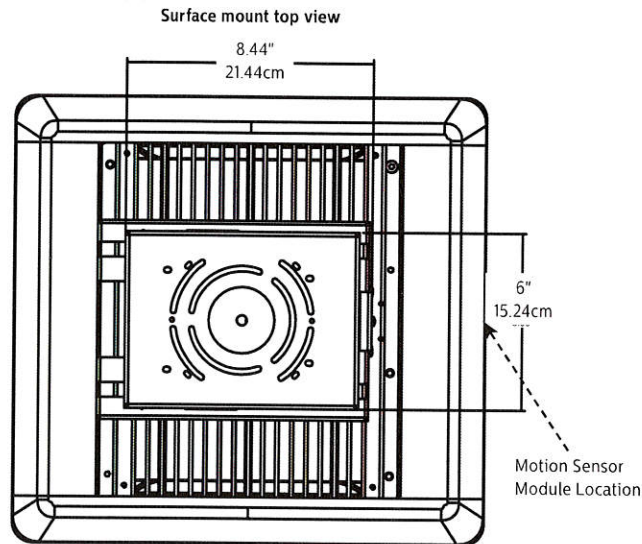
>Price per BOM only  
 >Complete quote must be used; no partials  
 >Spare material, allowances, dimmers and sales tax NOT included unless noted  
 >Prices include standard finishes only unless noted  
 >Lamps are not included unless noted (This does not apply to fixtures with internal LED diodes)  
 >Pole wind load calculations do not include structural base engineering  
 >Project may include SESCO start-up services which consist of programming, testing, end user training and system configuration back up. These services are required for the manufacturers warranty. To ensure this warranty, SESCO start-up costs are non-refundable  
 >All warranties as per manufacturers terms  
 >All shipments FOB origin  
 >Deposits may be required as noted at time of breakdown  
 >Quotation valid 30 days  
 >Hold for Release orders do not secure project pricing but may be required for factory drawings

<b>Printed: 01/18/19 14:11:34 Per: LIL Email:</b>
---

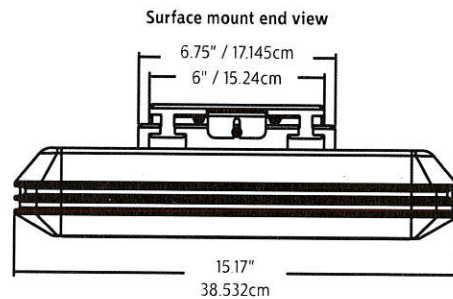
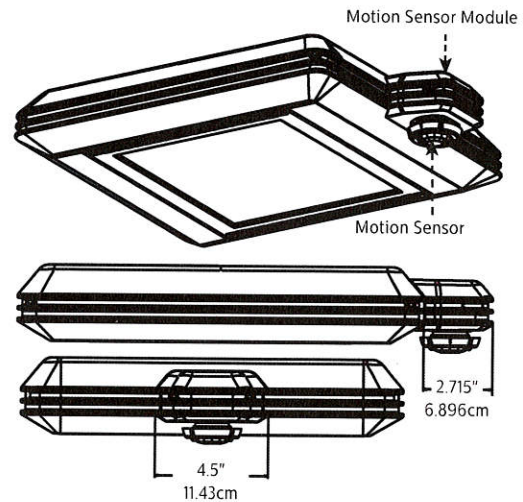
# SFC & SFCR SlenderForm LED luminaire

## Canopy mount

### Dimensions



### Surface mount luminaires with motion response (NOTE: Motion response NOT available with recessed mount)





# SFC & SFCR SlenderForm LED luminaire

## Canopy mount

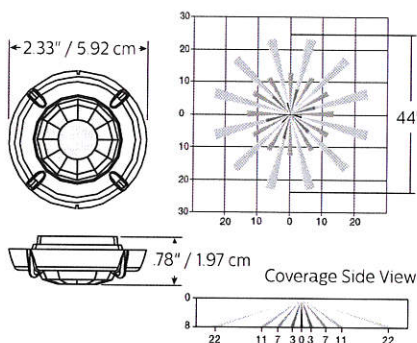
### Motion Response Luminaires

#### Programmable Motion Response

SFC-MR luminaires include a passive infrared (PIR) motion sensor (WattStopper® FS-211 equipped with an FS-L2W lens) capable of detecting motion within 22 feet of the sensor, 360° around the luminaire, when placed at an 8 foot mounting height. The PIR sensor is mounted as indicated in drawings on page 2. Available in 120V or 277V input only. Motion sensor off state power is 0.0 watts.

In Motion Response (MR) luminaires, when no motion is detected for 10 minutes, the Motion Response system reduces the wattage by 80%, to 20% (per RP-20) of the normal constant wattage, reducing the light level accordingly. When motion is detected by the PIR, the luminaire returns to full wattage and full light output. Dimming on low is factory set to 80% with duration set at 10 minutes.

The approximate motion sensor coverage pattern is as shown below.



#### FSIR-100 Wireless Remote Programming Tool

The FSIR-100 Remote Programming Tool accessory enables on-site field adjustment of sensor settings, including duration and dimming level on low, without the need to connect any wires to the luminaire.

The FSIR-100 Wireless IR Programming Tool is a handheld tool for setup and testing of WattStopper FSP-211. It provides wireless access to the FSP-211 sensors for setup and parameter changes.

The FSIR-100 display shows menus and prompts to lead you through each process. The navigation pad provides a familiar way to navigate through the customization fields.

Within 8'-12' mounting height of the sensor, the FSIR-100 allows modification of the system without requiring ladders or tools simply with a touch of a few buttons.

The FSIR-100 IR transceiver allows bi-directional communication between the FSP-211 and the FSIR-100 programming tool. Simple menu screens let you see the current status of the system and make changes. It can change FSP-211 sensor parameters such as high/low mode, sensitivity, time delay, cut off and more. With the FSIR-100 you can also establish and store FSP-211 parameter profiles.

The FSIR-100 operates on three standard 1.5V AAA Alkaline batteries or three rechargeable AAA NiMH batteries. The battery status displays in the upper right corner of the display. Three bars next to BAT= indicates a

full battery charge. A warning appears on the display when the battery level falls below a minimum acceptable level. To conserve battery power, the FSIR-100 automatically shuts off 10 minutes after the last key press.

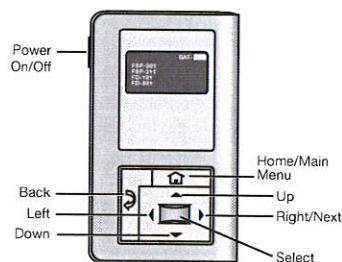


You navigate from one field to another using (up) or (down) arrow keys. The active field is indicated by flashing (alternates between

yellow text on black background and black text on yellow background.)

Once active, use the Select button to move to a menu or function within the active field. Value fields are used to adjust parameter settings. They are shown in "less-than/greater-than" symbols: <value>. Once active, change them using (left) and (right) arrow keys. In general the up key increments and the down key decrements a value. Selections wrap-around if you continue to press the key beyond maximum or minimum values. Moving away from the value field overwrites the original value. The Home button takes you to the main menu. The Back button can be thought of as an undo function. It takes you back one screen. Changes that were in process prior to pressing the key are lost.

More information on the FSIR-100 Remote Programming Tool is available at [wattstopper.com](http://wattstopper.com).

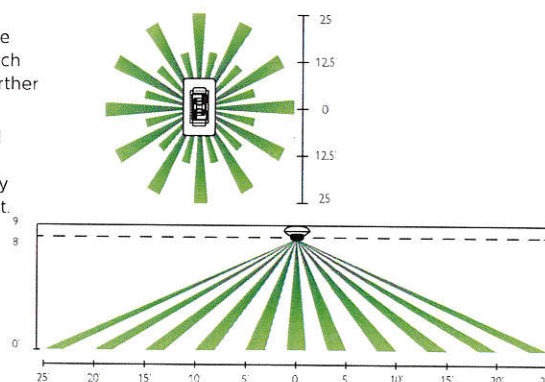


#### Radio and motion sensor details

- Motion sensor coverage can be adjusted from a narrow to a wide (25' radius) detection range, which helps reduce false triggers to further increase energy savings.
- 1.8 Watts max (no load draw)
- Operating voltage 120-277 VAC RMS
- Communicates using the ZigBee protocol
- Carries out dimming commands from Gateway
- Reports ambient light readings to 1500 Ft-Cd
- Transmission Systems Operating within the band 2400-2483.5Mhz

- Motion sensor coverage can be adjusted from a narrow to a wide (25' radius) detection range, which helps reduce false triggers to further increase energy savings.
- Sensing profiles can be updated to adapt to activity levels in the environment, such as occupancy level, wind, and mounting height.
- ROHS Compliant

#### Typical Sensor Coverage





# SFC & SFCR SlenderForm LED luminaire

## Canopy mount

### Specifications

#### General Description

Each Philips Gardco SlenderForm luminaire is a ceiling surface, ceiling pendant or recessed mounted ceiling / canopy / garage luminaire featuring LEDs mounted in a fixed array. Internal components are totally enclosed in a rain-tight, dust-tight and corrosion resistant housing. Luminaires are suitable for wet locations.

#### Housing

Rugged extruded aluminum housing body with an integral LED thermal management system, with die cast aluminum end caps.

#### Surface Mounted Luminaires – Quick mount plate and mounting

A die formed 14 ga. galvanized steel plate is supplied for mounting to a recessed, surface, or rigid pendant hung 4" (10.16 cm) j-box (standard j-box and rigid pendant by others). All pendants, including rigid pendants and swivel pendants are supplied by others.

**Caution:** Philips Gardco is not responsible for failure of mounting components supplied by others. Proper care should be exercised in mounting component selection to ensure adequate luminaire support, given luminaire weight, vibration potential and thermal conditions present in the application. If luminaires are supported solely by screws into a composite j-box, additional support directly to structure is recommended.

#### Recessed Mounted Luminaires

SFCR luminaires are provided with a recessed mounting kit for installation in a drywall ceiling which includes a wood support structure. **SFCR luminaires are not suitable for installation in a grid ceiling.** Mounting kit includes a flush trim assembly. Installation can be performed from above or below the ceiling. The mounting kit has adjustable supports that mount to wooden support beams, capable of adjustment from a minimum 20" to a maximum 23.4" spacing.

SFCR luminaires are rated non-IC and require a minimum 3" clearance from insulation in all directions. The bottom of the luminaire will be approx. 1" below the ceiling after installation. SFCR recessed mount luminaires are NOT available with 900mA, MR, PCB, BX or JB.

#### LED Module

48 high power LEDs. Metal core printed circuit board. LEDs tested by ISO 17025-2005 accredited lab in accordance with IESNA LM-80 guidelines extrapolations in accordance with IESNA TM-21. IP66 sealed light engines designed and tested to rating IK10 in accordance with European standard EN 62262 (equivalent of international standard IEC 62262 2002). RoHS compliant. Color temperatures per ANSI/NEMA bin Warm White 3000K nominal (3045 +/- 175K), Neutral White 4000 Kelvin nominal (3985 +/- 250K), or Cool White 5700K nominal (5667 +/- 355K). CRI 70 min.

#### Electrical

Luminaires are equipped with an LED driver system that accepts 120V through 277V, 50Hz to 60Hz. (UNIV), or a driver that accepts 347V or 480V input. Power factor is not less than 90%. Optional 0-10V dimming to 10% power. RoHS compliant. Surge protector standard and is in accordance with IEEE / ANSI C62.41.2 guidelines, with a surge current rating of 10kA.

#### Optical Systems

The Type 3 optic is an LED array providing an IES Type III distribution. The Type 5 optic is an LED array providing an IES Type V, wide distribution. The Type 5R optic is an LED array providing an IES Type V distribution, in a rectangular pattern. The concentrated downlight (CD) optic is an LED array that provides a circular pattern of concentrated light directly below the luminaire.

#### Finish

Each luminaire receives a fade and abrasion resistant, electrostatically applied, thermally cured, triglycidal isocyanurate (TGIC) textured polyester powdercoat finish. Standard color is Medium Gray paint.

#### Predicted Lumen Depreciation Data

Ambient Temperature °C	System Current	Calculated L70hrs <sup>1,2</sup>	L70 per TM21 <sup>2,3</sup>	Lumen Maintenance @ 60,000hrs
25 °C	900 mA	>100,000	>60,000	97%

1. Predicted performance derived from LED manufacturer's data and engineering design estimates, based on IESNA LM-80 methodology. Actual experience may vary due to field application conditions.
2. L70 is the predicted time when LED performance depreciates to 70% of initial lumen output.
3. Calculated per IESNA TM 21-11. Published L70 hours limited to 6 times actual LED test hours.

#### LED Thermal Management

The housing design provides integral extruded aluminum thermal radiation fins to provide the excellent thermal management so critical to long LED system life.

#### IP Rating

SlenderForm luminaires are IP65 rated with dedicated IP66 rated LED modules. Optional GL Glass Lens assembly available when tempered glass lens is required.

#### Controls

Motion Response luminaires (MR) include a passive infrared (PIR) motion sensor (WattStopper FSP-211 equipped with an FS-L2W lens) capable of detecting motion within 22 feet of the sensor, 360° around the luminaire, when placed at an 8-12 foot mounting height. Available in 120V to 277V input only. Motion sensor off state power is 1 watt. In Motion Response luminaires, when no motion is detected for 10 minutes, the Motion Response system reduces the wattage by 80%, to 20% of the normal constant wattage per RP-20, reducing the light level accordingly. When motion is detected by the PIR, the luminaire returns to full wattage and full light output. Includes a daylight sensor which enables daylight harvesting. Wireless Remote Programming tool available (FSIR-100) for field programming (ordered separately).

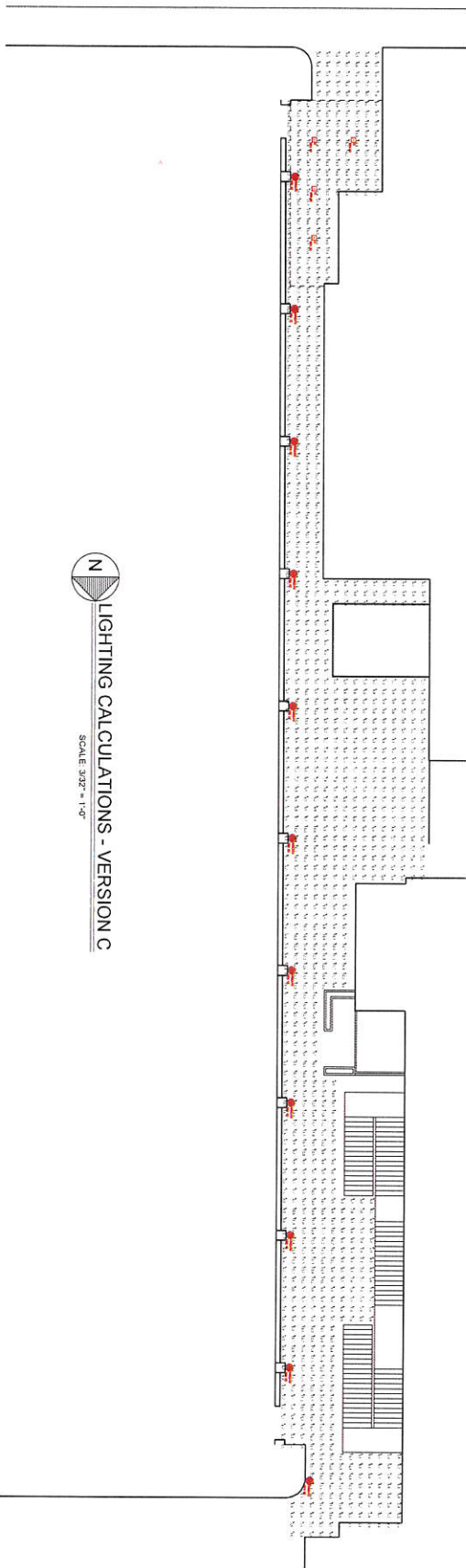
#### Listings

cULus Listed for Canada and USA. Entire luminaire is rated for operation in ambient temperatures from -40° (-40°F) to +40°C (+104°F). SFC and SFCR luminaires are DesignLights Consortium qualified when ordered with CW or NW LED color temperature. WW option does not meet DLC.

#### Limited Warranty

5 year limited warranty. See philips.com/luminaires for complete details and exclusions.





N  
LIGHTING CALCULATIONS - VERSION C  
SCALE 3/32" = 1'-0"

Luminaire Schedule						
Symbol	Qty	Label	Arrangement	Lum. Watts	Lum. Lumens	LLF
□	4	C	SINGLE	38.3	4660	0.900
★	8	WBC-T2	SINGLE	71	7445	0.900
★	3	WBC-T4	SINGLE	71	7260	0.900
Description						
				GARDCO # SFC-5R-48L-250-NW-G2		
				HADCO # CXTFX32-G2-3N7-16		
				HADCO # CXTFX32-G2-4N7-16		

Calculation Summary						
Label	CalcType	Units	Avg	Max	Min	Avg/Min
ALLEY	Illuminance	Fc	9.52	22.0	0.2	47.60
			Max/Min			
			110.00			

**GENERAL NOTES:**  
 THESE PHOTOMETRICS ARE INTENDED FOR DESIGN AND EVALUATION PURPOSES ONLY. THE POINT-BY-POINT SHOWN IS BASED ON A COMPUTER LIGHTING PROGRAM WITH APPROVED DATA. PHOTOMETRICS MAY VARY FROM ACTUAL FIELD CONDITIONS.  
 READINGS SHOWN ARE TAKEN AT GRADE.  
 MIN - LIGHTING FIXTURE MOUNTING HEIGHT ABOVE GRADE.

NOT ISSUED FOR CONSTRUCTION

LC-1C

PROJECT NO. 2018  
 DATE 12/07/2018  
 DRAWN BY FPGAS, J.

PROJECT NAME  
 CITY OF PENSACOLA  
 DOWNTOWN ALLEY LIGHTING  
 PENSACOLA, FLORIDA

DRAWING NAME  
 LIGHTING CALCULATIONS - VERSION C

DATE	ISSUE/REVISION



**SESCO**  
 LIGHTING

PENSACOLA OFFICE  
 200 E. GOVERNMENT ST. - SUITE 110  
 PENSACOLA, FL 32502  
 PHONE: (850) 262-0370  
 FAX: (850) 262-0376